A man with dark hair, wearing a blue polo shirt, is shown in profile from the chest up. He is looking towards the left of the frame. His right hand is raised to his head, with fingers running through his hair. The background is a soft, out-of-focus outdoor setting. The lighting is natural, highlighting the texture of his shirt and the contours of his face.

A GQ STORY
PRADA
SPRING-SUMMER 18

Foto di
GUY AROCH
Servizio di
ANDREA TENERANI

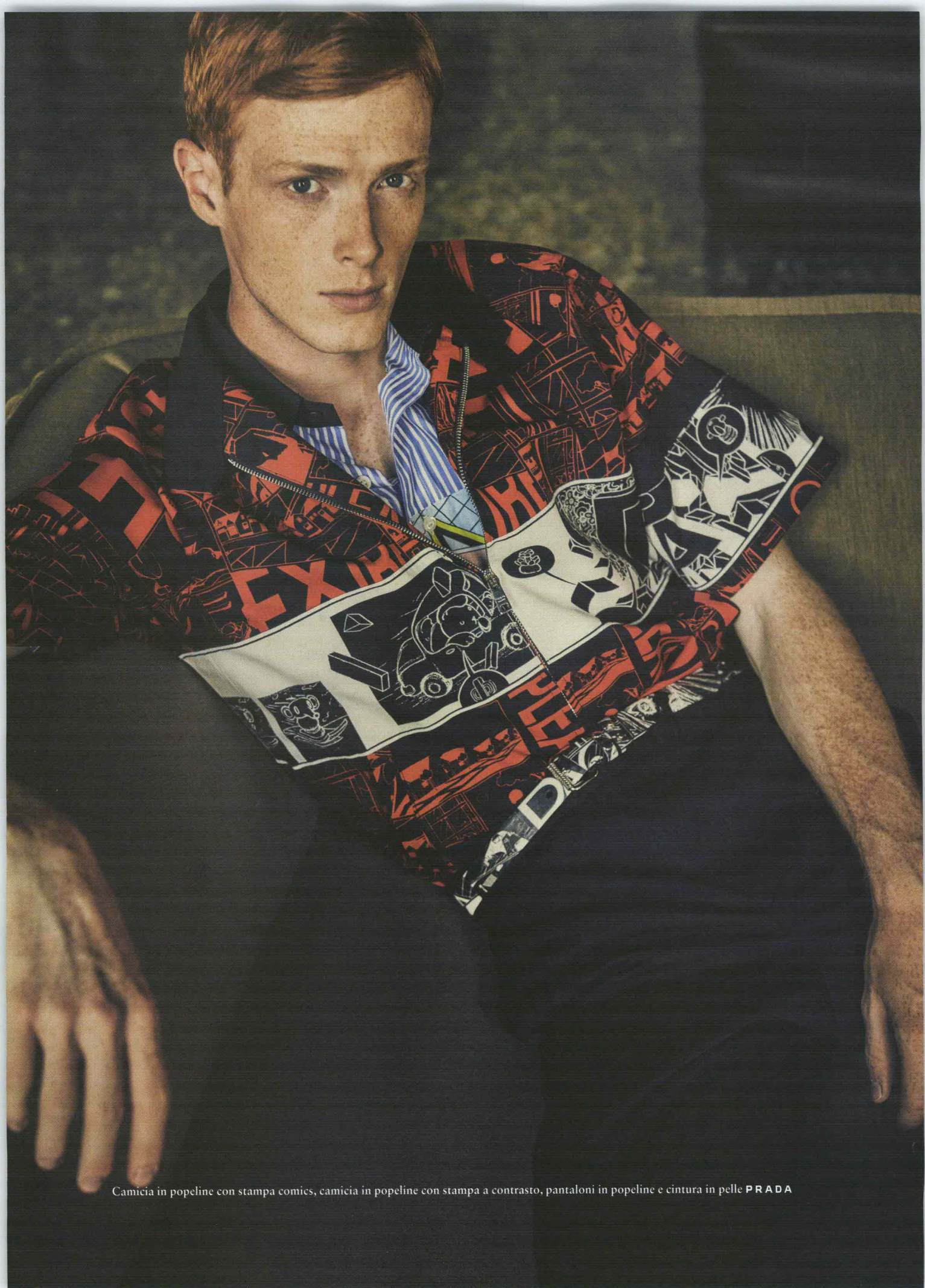
DRAFT NOVEL



Cappotto doppiopetto in denim, camicia in popeline con stampa comics, pantaloni in mohair bicolore, cintura in pelle e sneakers in nylon tecnico **PRADA**.
Nella pagina accanto: polo in popeline bicolore **PRADA**



Cappotto in lana, maglia in cashmere, camicia in popeline con stampa comics, pantaloni in gabardine e cintura in pelle con borchie **PRADA**



Camicia in popeline con stampa comics, camicia in popeline con stampa a contrasto, pantaloni in popeline e cintura in pelle PRADA



Giacca e pantaloni in mohair bicolore, cardigan in nylon tecnico, camicia in popeline stampata, cintura in pelle **PRADA**.
Nella pagina accanto: giacca e pantaloni in mohair, cardigan in nylon tecnico, camicia in popeline bicolore, cintura in pelle con borchie **PRADA**



Modelli: Linus @Fashion, Charlie @Elite. Styling: Nicolò Andreoni. Styling Assistant: Edoardo Caniglia.
Hair Stylist: David Ryan Concannon for Tony&Guy Italy. Make-up artist: Barbara Nania using Mac Cosmetics.
Ha collaborato Michele Viola. Si ringrazia il Sereno Hotel di Como (serenohotels.com)